

Instruction Sheet

Upgrading the TPC Version File

INTRODUCTION

NOTE: This process must be completed immediately following an DCP/CP software upgrade.

These instructions explain how to upgrade Touch Panel Controller version file (release.dlpcinema) without upgrading the rest of the TPC software. This file must be downloaded to the TPC in order for it to report the correct engine version information.

You will use an FTP program to transfer the new version file from your PC to the TPC currently connected to your DCP or CP Series projector (excludes CP2000-zx).

The release.dlpcinema file is identical to the one provided in the TI release packages (it is simply renamed).

REQUIREMENTS

- **TPC-642** or **TPC-60** or **TPC-66** used with any *DCP* or *CP Series* projector
- **Windows™ 2000** or **XP** running on a laptop or PC.
- **TI v11.1.33** or **newer** package extracted to PC (*This .zip is available from Christie's FTP site.*)
- **FTP application** such as FFFTP or WS_FTP, or as provided in Windows™ XP or Internet Explorer.

UPDATE PROCEDURE

NOTE: Screen shots throughout this document are for representation purposes only and may differ slightly from those on your screen.

FFFTP is a freeware FTP client application recommended for communicating with the TPC via file transfer protocol *NOTE: FFFTP is the only supported FTP software.* When installed and configured on a PC, the PC and TPC can transfer files back-and-forth via FTP—PC files appear in the left window, TPC files appear on the right. For this update to take effect, you will be required to replace the “release.dlpcinema” file located on the TPC “ISPM” directory (Right Window) with the “release.dlpcinema” file located within the TPC\ISPM folder of the TI release package.

1. Run FFFTP on a PC that is connected to the same network as the TPC. At the main window (Figure 1), click the **Connect** icon or **File Connect** menu. The **Host List** box should appear:

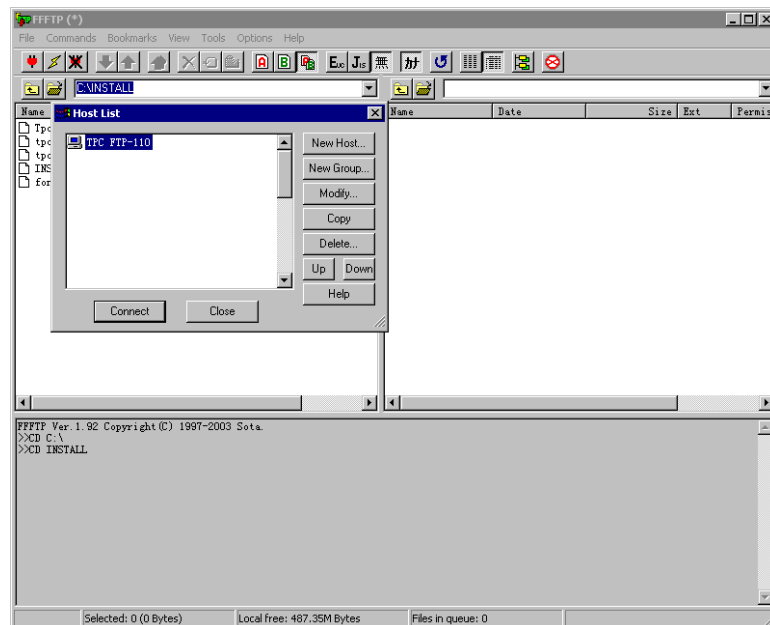
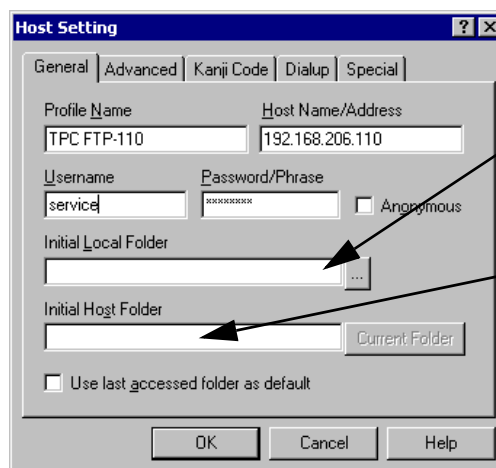


Figure 1 Main FFFTP Window with Host List

2. From the **Host List** of FTP servers, click the TPC FTP server and **Connect**. Or, if using FFFTP for the first time, click **New Host** to create a new connection to the FTP Server. The **Host Setting** box should now appear →.
3. Complete the **Host Setting** entries (Figure 2):
 - **Profile Name** (name desired for TPC)
 - **Host name/Address** (TPC IP default address is 192.168.206.110—use the unique and valid address defined for your site)
 - **Username** (TPC user name)
 - **Password** (TPC user password)



TIP: Use the "Initial Local Folder" to store the location where you keep the TI Install files.

TIP: Enter "/ISMP" in the "Initial Host Folder" to save steps later.

Figure 2 Host Setting

Keep other settings as default. Click OK, going back to the **Host List** window.

- Under the “Advanced” tab (Figure 3), make sure to **Uncheck** the selection to “Use PASV mode”.

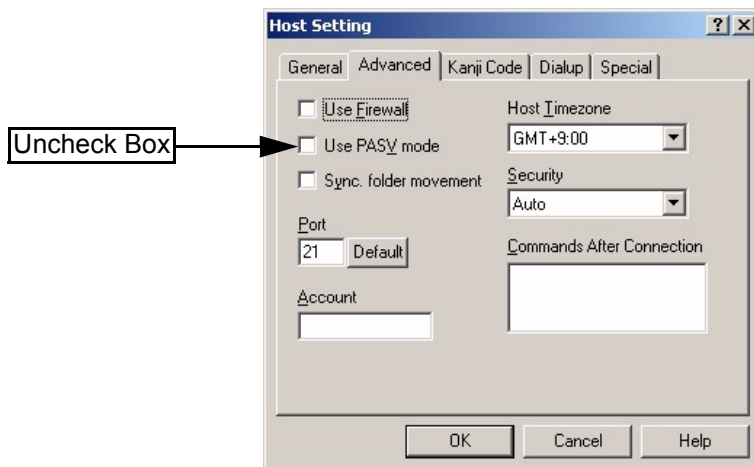


Figure 3 Host Setting-Advanced Tab

- In the **Host List** window (refer back to the top of page 2), click your desired site, and then click **Connect** to connect to the TPC FTP server. Both devices should now appear in the FTP windows (Figure 4).

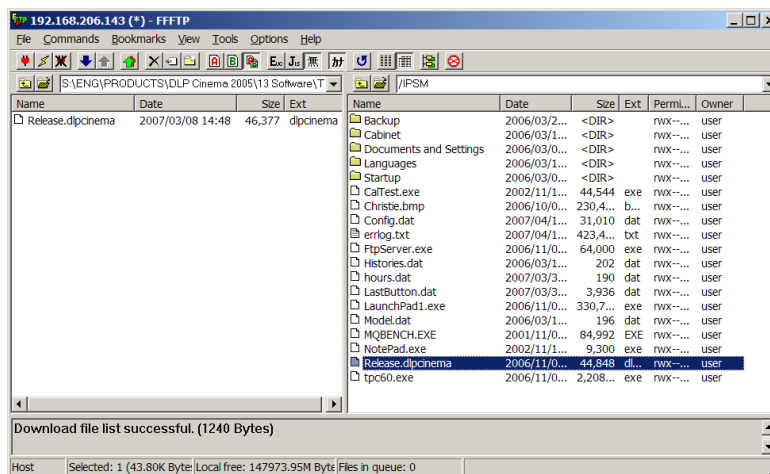


Figure 4 FFTP Window

- Transfer the file from the PC (left side of screen) to the TPC ISPM folder (right side of screen)

NOTE: PC should be pointing at “Release 11.1.33 (2007-04-15) CDS/TPC/PSM” (sample of a release package). The TPC should be pointing at the IPSM folder.

7. **Local Verification**-Navigate to the **About** tab (Figure 5) on the TPC to verify that the Engine software does not have any question marks behind it. *NOTE: If already on the about tab, navigate away from the about tab then back again; this will refresh the versions (Figure 6).*

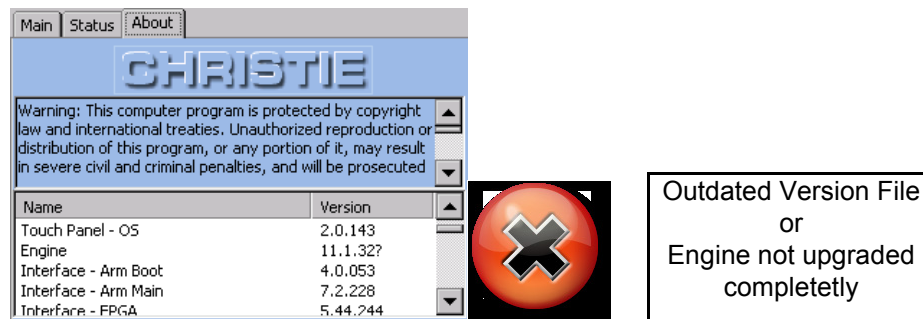


Figure 5 About Tab



Figure 6 Navigate away from About Tab and back in

8. Close FTP program.

TROUBLESHOOTING:

- If FFFFTP fails to download files properly, reconnect the TPCServer (refer back to page 2), and try again.
- If FFFFTP still fails to download files properly, re-boot the TPC by disconnecting then re-connecting it.
- If FFFFTP still fails to download files properly, try the WS_FTP or similar program.